

The Healthy Rivers plan for change is expected to be notified in September/ October 2016. These incoming regulations will affect all farmers in the Waikato river and Waipa river catchments

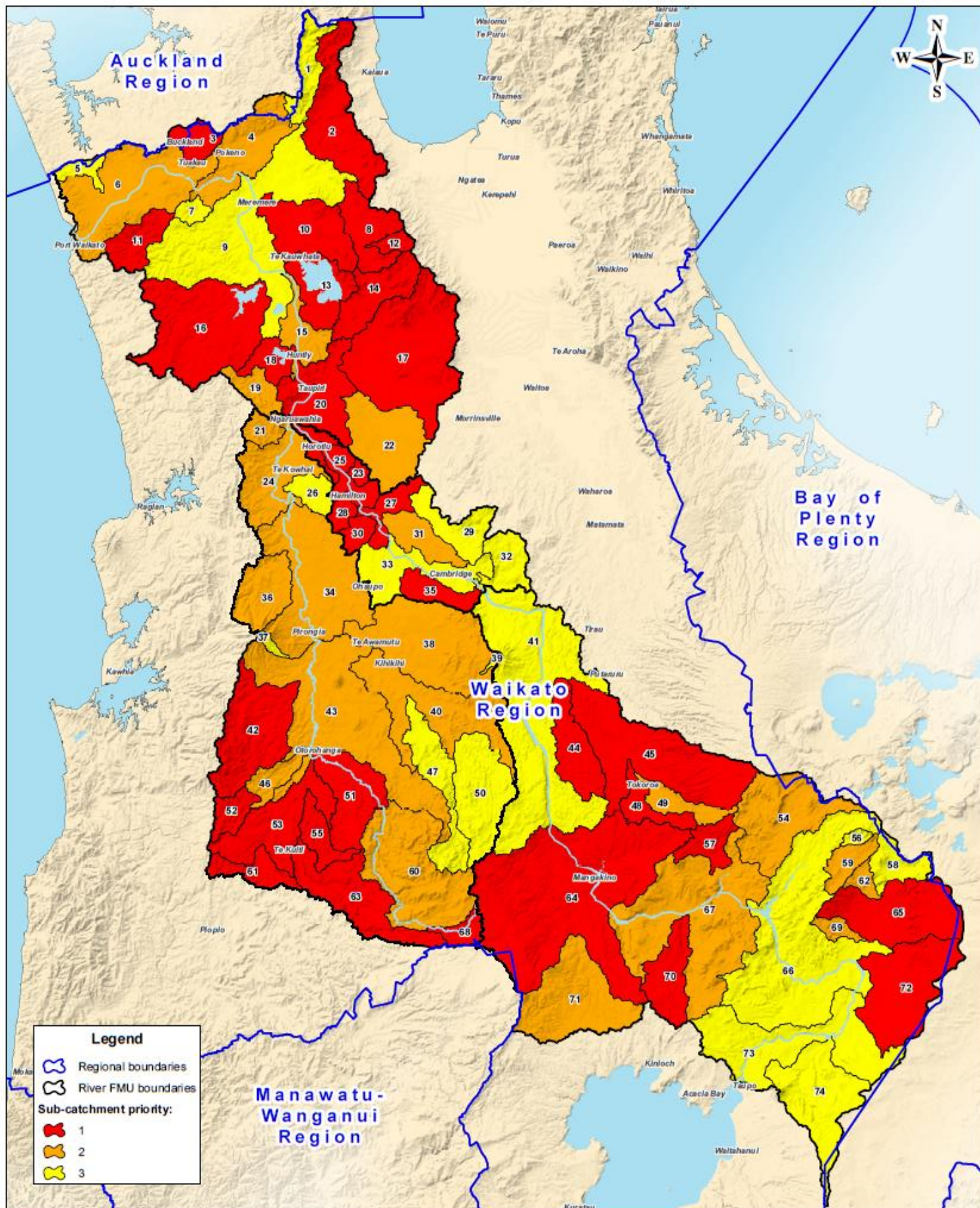
For more information, please go to:

<http://www.waikatoregion.govt.nz/healthyivers/>

and

[http://www.dairynz.co.nz/media/4682454/5066\\_Healthy\\_Rivers\\_summary\\_of\\_draft\\_rules\\_PR\\_22\\_Jul\\_16.pdf](http://www.dairynz.co.nz/media/4682454/5066_Healthy_Rivers_summary_of_draft_rules_PR_22_Jul_16.pdf)

The **attached map below** highlights the different priority catchments, farms in the priority catchments will be first farms to require environmental plans (by July 2020).



# Healthy rivers sub-catchment priority ranking

Created by: A Jeffries  
 Projection: NZTM  
 Date: 06/09/2016

Version: 3  
 Job No.: 32936  
 File Name: 32936\_Priority\_Sub\_Catchments.mxd



A2

Scale - 1:450,000 at A2

## Acknowledgements and Disclaimers

- © Waikato Regional Council 2013-2016. Healthy Rivers: Plan for Change / Wai Ora: He Rautaki Whakapaipai Data.
- Digital political boundaries data sourced from Statistics New Zealand.
- Hydrological data sourced from Land Information New Zealand. Crown Copyright Reserved.



DISCLAIMER: While Waikato Regional Council has exercised all reasonable skill and care in controlling the contents of this information, Waikato Regional Council accepts no liability in contract, tort or otherwise howsoever, for any loss, damage, injury expense (whether direct, indirect or consequential) arising out of the provision of this information or its use by you.